

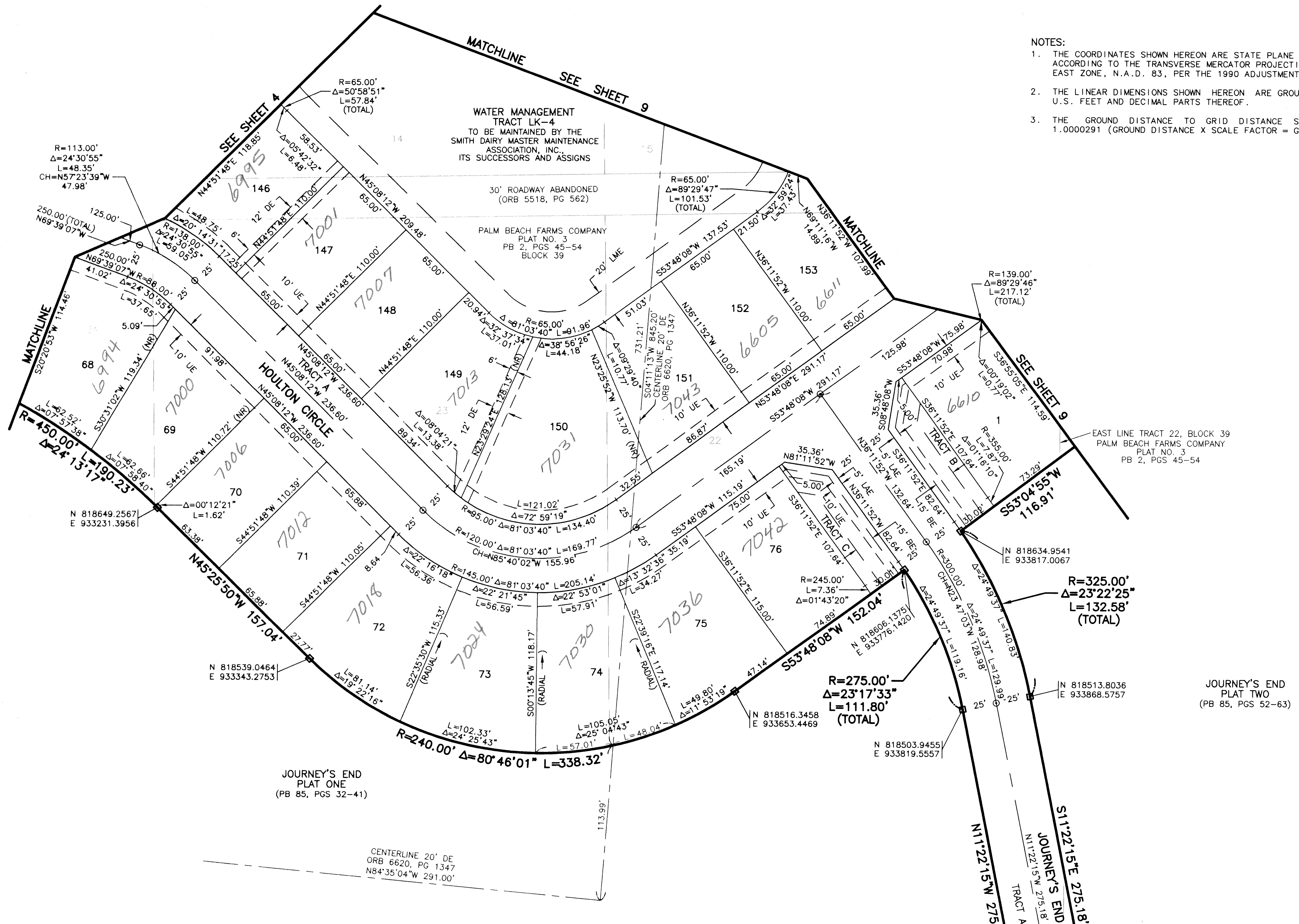
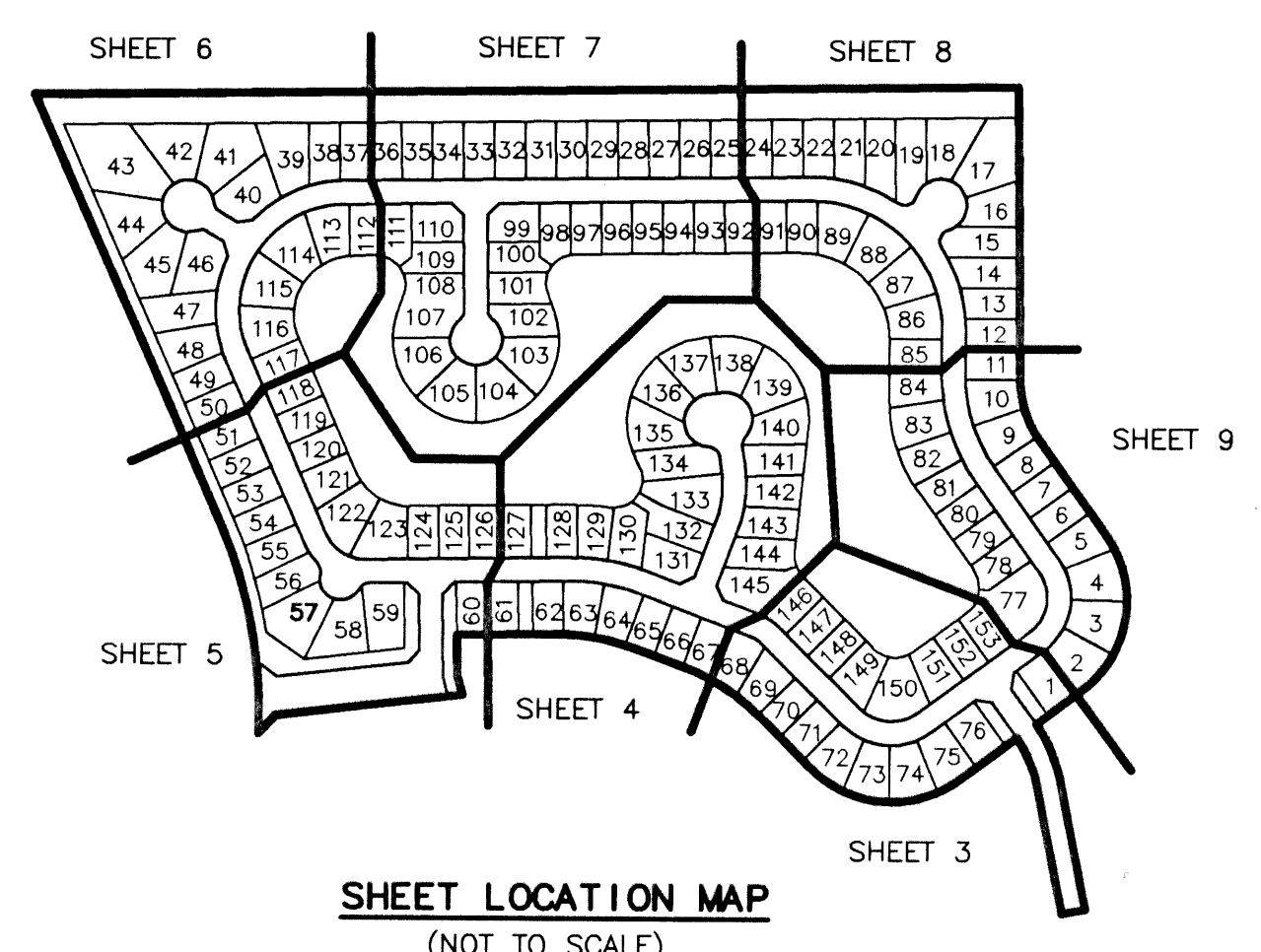
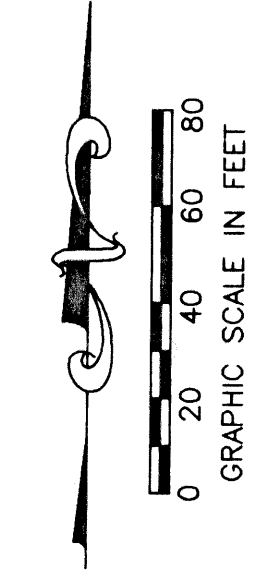
STATE OF FLORIDA
 COUNTY OF PALM BEACH

THIS PLAT WAS FILED FOR
 RECORD _____ DAY OF _____
 AD, 2000 AND DULY RECORDED
 IN PLAT BOOK _____ ON PAGES
 _____ AND _____

DOROTHY H. WILKEN, CLERK
 BY: _____, D.C.

CIRCUIT COURT SEAL

- NOTES:
- THE COORDINATES SHOWN HEREON ARE STATE PLANE GRID COORDINATES ACCORDING TO THE TRANSVERSE MERCATOR PROJECTION OF THE FLORIDA EAST ZONE, N.A.D. 83, PER THE 1990 ADJUSTMENT.
 - THE LINEAR DIMENSIONS SHOWN HEREON ARE GROUND DISTANCES IN U.S. FEET AND DECIMAL PARTS THEREOF.
 - THE GROUND DISTANCE TO GRID DISTANCE SCALE FACTOR IS 1.0000291 (GROUND DISTANCE X SCALE FACTOR = GRID DISTANCE).



JOURNEY'S END PLAT THREE

PART OF SMITH DAIRY EAST P.U.D.
 SITUATE IN SECTIONS 3 AND 4, TOWNSHIP 45 SOUTH, RANGE 42 EAST,
 BEING A REPLAT OF A PORTION OF BLOCKS 38 AND 39,
 AND THE 50' RIGHT OF WAY, AS SHOWN ON THE PLAT OF
 PALM BEACH FARMS COMPANY, PLAT NO. 3, PB 2, PGS 45 - 54,
 PALM BEACH COUNTY, FLORIDA
 MAY, 1999 SHEET 3 OF 9

- LEGEND
- L ARC LENGTH
 - AE ACCESS EASEMENT
 - BE BUFFER EASEMENT
 - Δ CENTRAL (DELTA) ANGLE
 - CH CHORD
 - DE DRAINAGE EASEMENT
 - LAE LIMITED ACCESS EASEMENT
 - LMAE LAKE MAINTENANCE EASEMENT
 - LMAE LAKE MAINTENANCE ACCESS EASEMENT
 - PUD PLANNED UNIT OF DEVELOPMENT
 - (NR) NON-RADIAL
 - ORB OFFICIAL RECORD BOOK
 - PB PLAT BOOK
 - PG(S) PAGE(S)
 - R RADIUS
 - (TYP) TYPICAL
 - UTILITY EASEMENT
 - PERMANENT REFERENCE MONUMENT
 - FOUND LB-048
 - PERMANENT REFERENCE MONUMENT
 - SET LB-048
 - PERMANENT CONTROL POINT
 - SET LB-048
 - ⊕ CENTERLINE

PALM BEACH COUNTY
 CONTROL POINT
 "STORM II"
 N 817261.4783
 E 935275.5084

THIS INSTRUMENT WAS PREPARED BY DAVID L. SMITH, P.S.M. IN THE OFFICES OF MOCK, ROOS & ASSOCIATES, INC., 5720 CORPORATE WAY, WEST PALM BEACH, FLORIDA 33407.

SCALE:
 1"=40'
 P.A. NO.:
 98082.72
 DATE:
 MAY, 1999
 DRAWING NO.:
 45-42-03-79

MOCK • ROOS
 ENGINEERS • SURVEYORS • PLANNERS

5720 Corporate Way, West Palm Beach, Florida 33407
 (561) 683-3113, fax 478-7248

JOURNEY'S END PLAT THREE
 PART OF SMITH DAIRY EAST P.U.D.
 SITUATE IN SEC 3 AND 4, TWP 45 S, RGE 42 E,
 BEING A REPLAT OF A PORTION OF BLOCKS 38 AND 39,
 AND THE 50' RIGHT OF WAY, AS SHOWN ON THE PLAT OF
 PALM BEACH FARMS COMPANY, PLAT NO. 3, PB 2, PGS 45-54,
 PALM BEACH COUNTY, FLORIDA

REVISION: 7-22-99
 CAD FILE: WESTSM_B/SM_BRP02